



IndianOil

# Performance at a glance

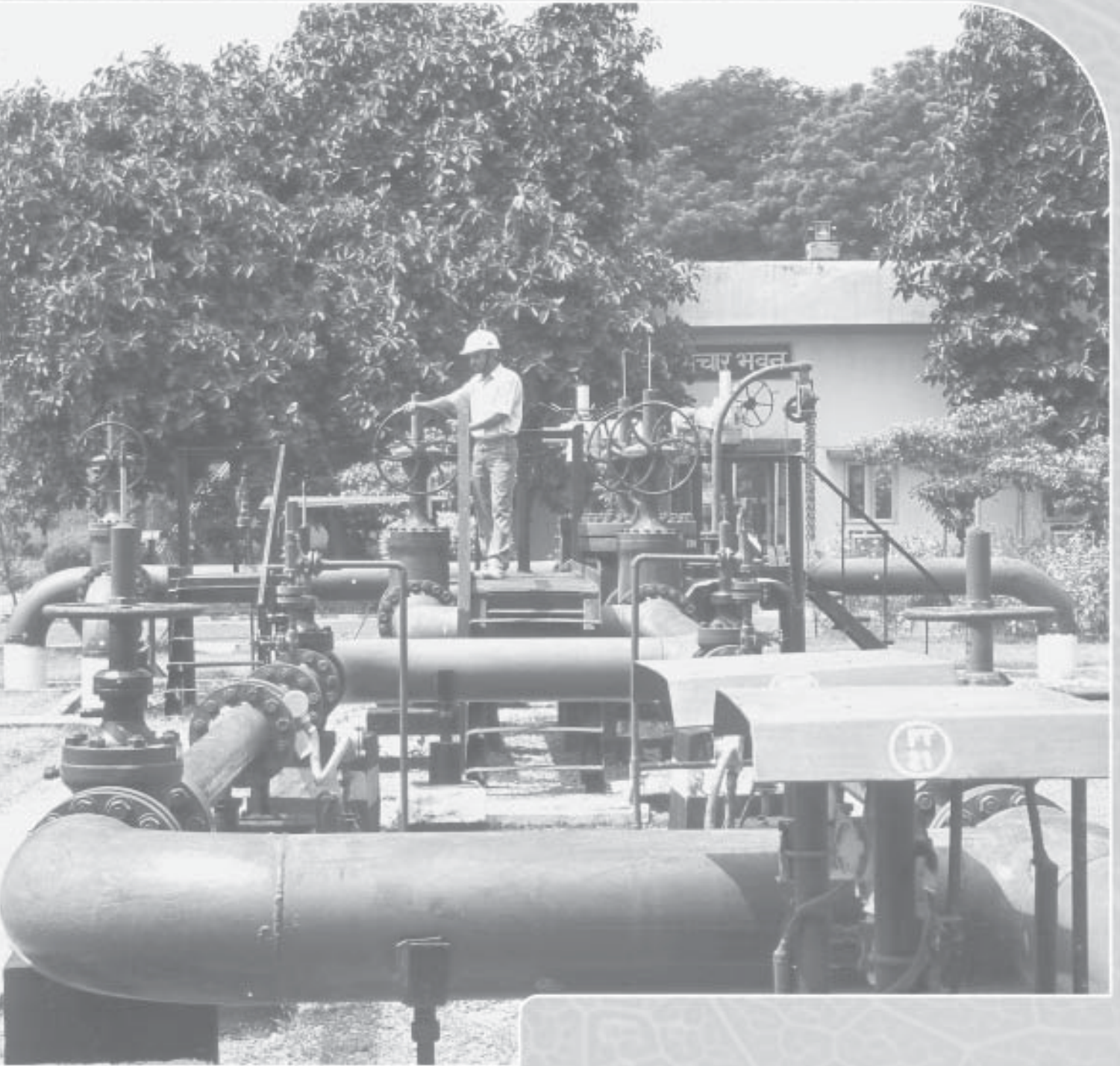
	2009-10 ( US \$ Million )	2008-09	2009-10	2008-09	2007-08	2006-07	2005-06
					(Rs. in Crore)		
<b>I FINANCIAL</b>							
Turnover (Inclusive of Excise Duty)	57,116	62,043	271,074	285,398	247,457	220,779	183,172
Gross Profit *	3,976	2,461	18,872	11,319	14,334	14,622	9,931
Profit Before Interest & Tax	3,294	1,800	15,632	8,281	11,626	11,990	7,728
Profit Before Tax	2,972	941	14,106	4,329	10,080	10,485	6,706
Profit After Tax	2,154	641	10,221	2,950	6,963	7,499	4,915
Dividend	665	198	3,156	910	656	2,251	1,460
Dividend Tax	107	34	509	155	76	362	205
Retained Earnings	1,382	409	6,556	1,885	6,231	4,886	3,250
Value Added	6,895	6,849	32,725	31,507	24,667	24,716	17,132
Contribution to Central Exchequer (incl. Dividend paid to Central Govt.)	5,592	5,628	26,541	25,891	34,249	28,431	24,449
Cumulative Dividend	3,914	3,352	18,575	15,419	14,509	13,853	11,602
* Profit Before Depreciation, Interest Expenditure and Tax.							
<b>What Corporation Owns</b>							
Gross Fixed Assets	16,055	12,292	72,089	62,345	56,832	54,837	43,695
Depreciation & Amortisation	6,794	5,435	30,508	27,567	24,060	21,467	18,672
Net Fixed Assets	9,261	6,857	41,581	34,778	32,772	33,370	25,023
Capital Work In Progress	4,737	3,576	21,269	18,140	9,170	4,395	9,646
Investments	4,982	6,355	22,370	32,232	21,536	19,991	14,521
Working Capital	3,260	1,826	14,637	9,261	18,391	9,407	10,882
Misc. Expenditure	4	7	18	38	125	157	58
<b>Total</b>	<b>22,244</b>	<b>18,621</b>	<b>99,875</b>	<b>94,449</b>	<b>81,994</b>	<b>67,320</b>	<b>60,130</b>
<b>What Corporation Owes</b>							
<b>Net Worth</b>							
- Share Capital	541	235	2,428	1,192	1,192	1,168	1,168
- Share Suspense Account	-	4	-	22	-	24	-
- Reserves	10,718	8,435	48,125	42,784	39,894	33,665	28,135
- Total	11,259	8,674	50,553	43,998	41,086	34,857	29,303
Borrowings	9,926	8,867	44,566	44,972	35,523	27,083	26,404
Deferred Tax Liability	1,059	1,079	4,756	5,474	5,385	5,380	4,423
Foreign Currency Monetary Item Translation Difference Account	-	1	-	5	-	-	-
<b>Total</b>	<b>22,244</b>	<b>18,621</b>	<b>99,875</b>	<b>94,449</b>	<b>81,994</b>	<b>67,320</b>	<b>60,130</b>



PX-PTA plant at Panipat

Note: Figures for the previous year have been regrouped, wherever necessary.

# Safety, Efficiency and low cost Solutions



# P

## erformance at a glance

(contd.)

	2009-10	2008-09	2009-10	2008-09	2007-08	2006-07	2005-06
<b>Ratios</b>							
<b>Debt Equity Ratio</b>							
- Total Debt To Equity	0.88:1	1.02:1	0.88:1	1.02:1	0.86:1	0.78:1	0.90:1
- Long Term Debt To Equity	0.36:1	0.36:1	0.36:1	0.36:1	0.28:1	0.31:1	0.39:1
Profit After Tax To Average Networth (%)	21.62	6.93	21.62	6.93	18.34	23.38	17.78

	2009-10 ( US \$ )	2008-09	2009-10	2008-09	2007-08 (Rs.)	2006-07	2005-06
Earnings Per Share*	0.89	0.26	42.10	12.15	29.20	31.45	21.04
Cash Earnings Per Share*	1.17	0.54	55.44	24.66	40.55	42.49	30.47
Networth Per Equity Share*	4.64	3.57	208.21	181.22	172.29	146.17	125.44

\* Earnings Per Share, Cash Earnings Per Share and Net Worth per Equity Shares for all the periods have been adjusted for Bonus Issue in November 2009

Note: Exchange rate used:-

For 2009-10 Average Rate 1 US \$ = Rs. 47.46 and Closing Rate 1 US \$ = Rs. 44.90 as on 31.03.2010

For 2008-09 Average Rate 1 US \$ = Rs. 46.00 and Closing Rate 1 US \$ = Rs. 50.72 as on 31.03.2010

### II OPERATIONS

Million Metric Tonnes (MMT)

	2009-10	2008-09	2007-08	2006-07	2005-06	
<b>Operating Performance</b>						
<b>Product Sales</b>						
<b>Domestic</b>						
- Petroleum Products	63.030	60.887	57.548	53.363	46.217	
- Gas	1.683	1.666	1.737	1.482	1.297	
- Petrochemicals	0.652	0.540	0.528	0.305	0.107	
- Explosives	0.058	0.051	0.042	0.048	-	
Total Domestic	65.423	63.144	59.855	55.198	47.621	
Export	4.497	3.613	3.331	3.131	2.089	
Total	69.920	66.757	63.186	58.329	49.710	
Refineries Throughput	50.696	51.367	47.401	44.002	38.519	
Pipelines Throughput	65.007	59.627	57.121	51.693	45.348	
<b>III MANPOWER</b>	Nos.	34363	33998	31945	29862	30048



*Our groundwork takes you sky high*





*Harnessing Wind Power*

